



**SCIENCE**  
**FESTIVAL**™  
*Presented by* THE BIOGEN FOUNDATION

**2017 Final Report**



## CONTACTS

### North Carolina Science Festival

Morehead Planetarium and Science Center  
University of North Carolina at Chapel Hill  
Campus Box 3480 • Chapel Hill, NC 27599-3480  
www.ncsciencefestival.org • ncscifest@unc.edu  
919-843-8329

**Jonathan Frederick**  
*Festival Director*  
jfred@unc.edu

**Todd Boyette, Ph.D.**  
*Festival Co-founder*  
todd\_boyette@unc.edu

**Crystal Harden**  
*Director of Programs  
and Strategic Initiatives*  
charden@unc.edu

**Omar Bell**  
*Sponsorships*  
omar\_bell@unc.edu

**Adam Phelps**  
*Sponsorships*  
arphelps@unc.edu

**North Carolina Science Festival** is a statewide two-week celebration of STEM — science, technology, engineering and mathematics — with community-based events hosted by museums, science centers, colleges, universities, businesses, parks, libraries and other sites.

Founded in 2010 by Morehead Planetarium and Science Center at the University of North Carolina at Chapel Hill, the Festival has served 1.8 million participants of all ages since its inception.

The Festival is made possible through generous support from leading business and government partners and through the participation of hundreds of event hosts across North Carolina.

## ADVISORY BOARD

**Chair – Chancellor Emeritus  
James Moeser**  
*UNC-Chapel Hill*

**Betsy Bennett, Ph.D.**  
*Capital Development Services*

**John Burris, Ph.D.**  
*Burroughs Wellcome Fund*

**Alfred G. Childers, Ph.D.**  
*MagellanScience.org*

**Joseph M. DeSimone, Ph.D.**  
*NC State University  
UNC-Chapel Hill*

**Chancellor Philip Dubois**  
*UNC Charlotte*

**Lew Ebert**  
*North Carolina Chamber*

**Marilyn Foote-Hudson**  
*North Carolina GlaxoSmithKline  
Foundation*

**Ann B. Goodnight**  
*SAS*

**John Hardin, Ph.D.**  
*North Carolina Department of  
Commerce*

**Howard N. Lee**  
*Howard N. Lee Institute*

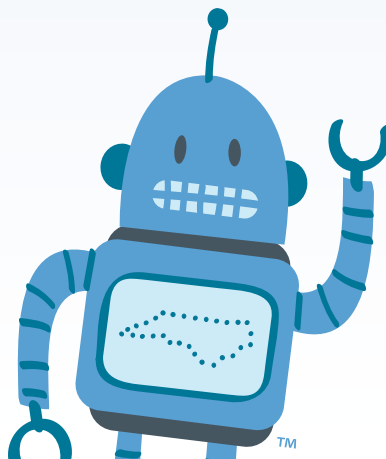
**Charles A. Sanders, M.D.**  
*Retired Chairman & CEO,  
GlaxoSmithKline*

**Melissa Seymour**  
*Biogen Foundation*

**Christy L. Shaffer, Ph.D.**  
*Hatteras Venture Partners*

**Richard Superfine, Ph.D.**  
*UNC-Chapel Hill*

**Chancellor W. Randolph  
Woodson**  
*NC State University*



# Dear Friends,

**As the North Carolina Science Festival (NCSF) continues to grow**, it has never been so true — Morehead Planetarium and Science Center can't produce our annual spring science extravaganza without you, the thousands of sponsors, event partners and volunteers who turn out each year. Thank you! Because of our partnerships, multitudes of North Carolinians experience the fun and fascination of science, technology, engineering and math in lasting ways. Together, we significantly heighten the science literacy of our state. Governor Roy Cooper sees the value in what we accomplish with the Festival. We were honored to have him here at Morehead on April 6 to declare April STEM Education month in North Carolina.

All our hard work is important. Just ask the middle school boy attending a hands-on demonstration on water filtration led by UNC graduate students at the Morehead's STEMville Science Symposium. As soon as the goggles, lab coats and gloves came out, he snapped to attention and said: "Wow, this is getting important." Mission accomplished.

It has been eight years since we first had the notion to bring the fun and "ah-ha" moments of science to the whole state of North Carolina. We used the North Carolina State Fair as inspiration. We wanted the same blend of community, creativity, talent and memorable experiences that are the connecting tissue of the State Fair, but with scientific wonder as the focus. We realized quickly that we were onto something big and wonderful. As corporations and others get into the act, the festival experience has now been dubbed a movement. There's even a word for it: "festivalization".

We've come a long way in those eight years of planning, launching and growing the NCSF. We are immensely grateful for the opportunity to share it with North Carolina, thanks to so many of you. We hope to see you in 2018!

Sincerely,



**TODD BOYETTE**

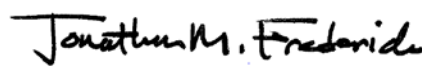
Director, Morehead Planetarium and Science Center  
Co-founder, North Carolina Science Festival



*Morehead Director Todd Boyette stands at the entrance to Morehead Planetarium and Science Center with Apollo 13 commander Captain James Lovell.*



*Festival staff, including Festival Director Jonathan Frederick (second from left) pose with our spokesbot, Kelvin, at an event at UNC Children's Hospital.*



**JONATHAN FREDERICK**

Director, North Carolina Science Festival  
Senior Manager, Morehead Programs and Strategic Partnerships

# By the Numbers

This year's Festival reached all 100 North Carolina counties through a combination of public events, K-12 programming and statewide outreach initiatives.



**451**

**PUBLIC  
EVENTS**

**105,506**  
**PARTICIPANTS**



**355**

**K-12  
EVENTS**

**47,011**  
**PARTICIPANTS**



**39**

**YEAR-ROUND  
EVENTS**

**12,560**  
**PARTICIPANTS**



**5**

**ON-AIR/ONLINE  
EVENTS**

**75,062**  
**VIEWERS**



**2,500**  
PING PONG BALLS  
LAUNCHED INTO  
THE AIR



Photo credit: Jon Gardiner

**2,743**

**STEM PROFESSIONALS**

*1:39 ratio of attendees to  
STEM professionals*



**2**

**ASTRONAUTS**

*NASA astronauts Jim  
Lovell and Tom Jones  
both held speaking events  
during the Festival.*

**5,218**

**VOLUNTEERS**

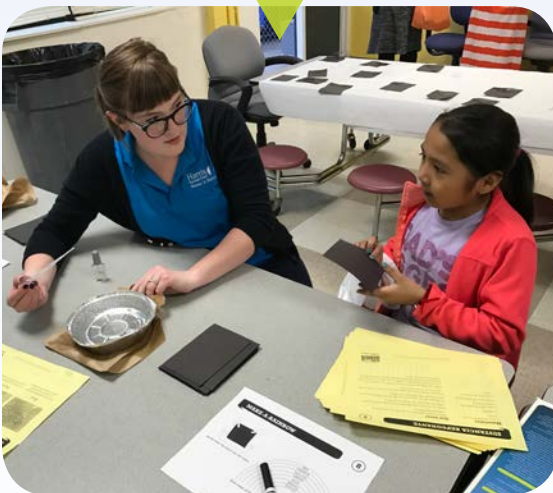


Photo credit: Leigh Fairley

**1 EVENT IN BOTSWANA**

*A Morehead student alum hosted a special Festival  
event with the help of the US Peace Corps.*

# Making an Impact

Our sponsors made 2017 a stellar year! Here are a few of the highlights.

## IMPACTS: Inspiring Meaningful Programs and Communication Through Science

Thanks to the generous support of the North Carolina GlaxoSmithKline Foundation, the NC Science Festival was able to launch a new initiative focused on training scientists in public communication. The IMPACTS program recruits and trains scientists who reflect the diversity of North Carolina and are eager to communicate their passion for science. In 2017, Elizabeth City State University, UNC Pembroke, Winston-Salem State University and UNC-Chapel Hill served as host sites for trainings as well as public science events where audiences could interact with scientists who look like them, making science careers seem possible among underrepresented and underserved populations.



Photo credit: Willis Glasgow, University Communications & Marketing, UNC Pembroke



Photo credit: Kim Ullom

## Duke Energy Science Nights Core to Festival's Education Offerings

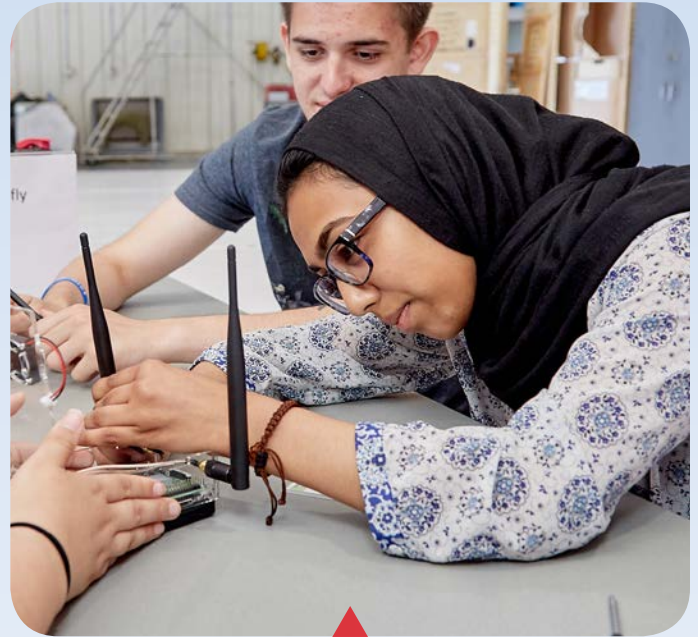
150 Duke Energy Science Nights provided North Carolina elementary school students and their families the opportunity to engage in hands-on science, technology, engineering and math (STEM) activities that were as fun as they were educational. These free events held in almost every county of the state brought science to 37,000 people this year and provided Duke Energy volunteers the chance to engage with their local communities.



Photo courtesy of Google

## Gravity Games Sets Course for Fun with STEM

The sixth annual NC Gravity Games held in Lenoir, N.C. was an “adrenaline-drenched, STEM-soaked” success. A signature event of the North Carolina Science Festival, the Games are a collaboration between Google, Appalachian State University and Morehead Planetarium and Science Center. 74 teams from around the state raced head to head through downtown Lenoir in homemade vehicles. Fans and racers alike enjoyed the fun as Main Street was converted to Science Street.



Copyright © 2017 SAS Institute Inc. All Rights Reserved. Used with permission.

## First SAS-Sponsored Event Flies High

SAS, the leader in analytics based in Cary, N.C., organized a first-time event for 25 lucky high school students who applied to participate. “Data on the Fly” was held at NCDOT’s Department of Aviation hangar at Raleigh-Durham International Airport. The students worked with SAS experts to build real-time airplane monitoring systems and tested their devices by recording data on the tarmac, as they watched flights arrive and depart.



Photo credit: Cherelle Sanders

## Novozymes SciMatch Pairs Teachers with STEM Professionals

Nearly 5,000 middle school students had the opportunity to learn science first-hand from STEM professionals statewide through the new Novozymes SciMatch program. Scientists shared their background and research with students before leading hands-on activities in the classroom. The program allowed teachers and students to learn about cutting-edge research while scientists had the chance to experience a day in the life of a teacher.

# The Big Picture

850 events at 438 locations  
in 100 counties.

- K-12 Events
- Public Events



**Mountain Science Expo**  
ASHEVILLE

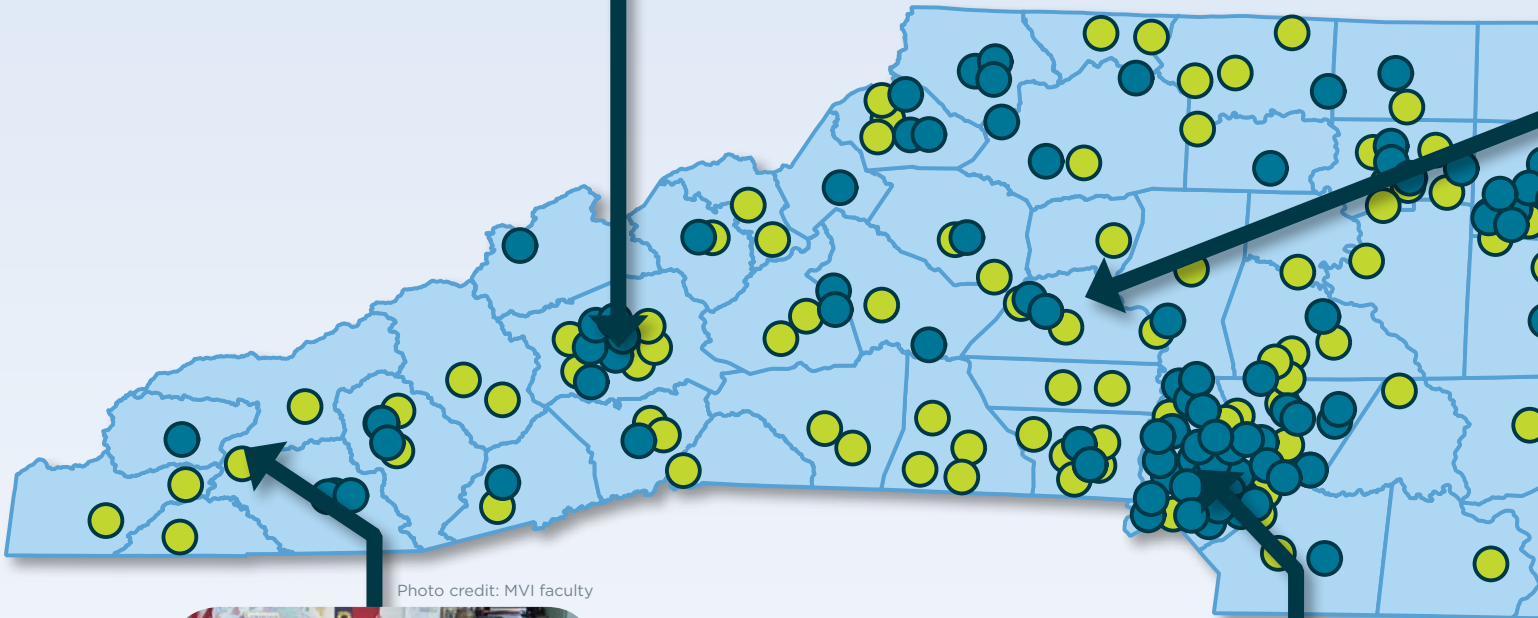


Photo credit: MVI faculty



**Mountain View STEM Career Fair**  
FRANKLIN



**Sensational Science**  
CHARLOTTE

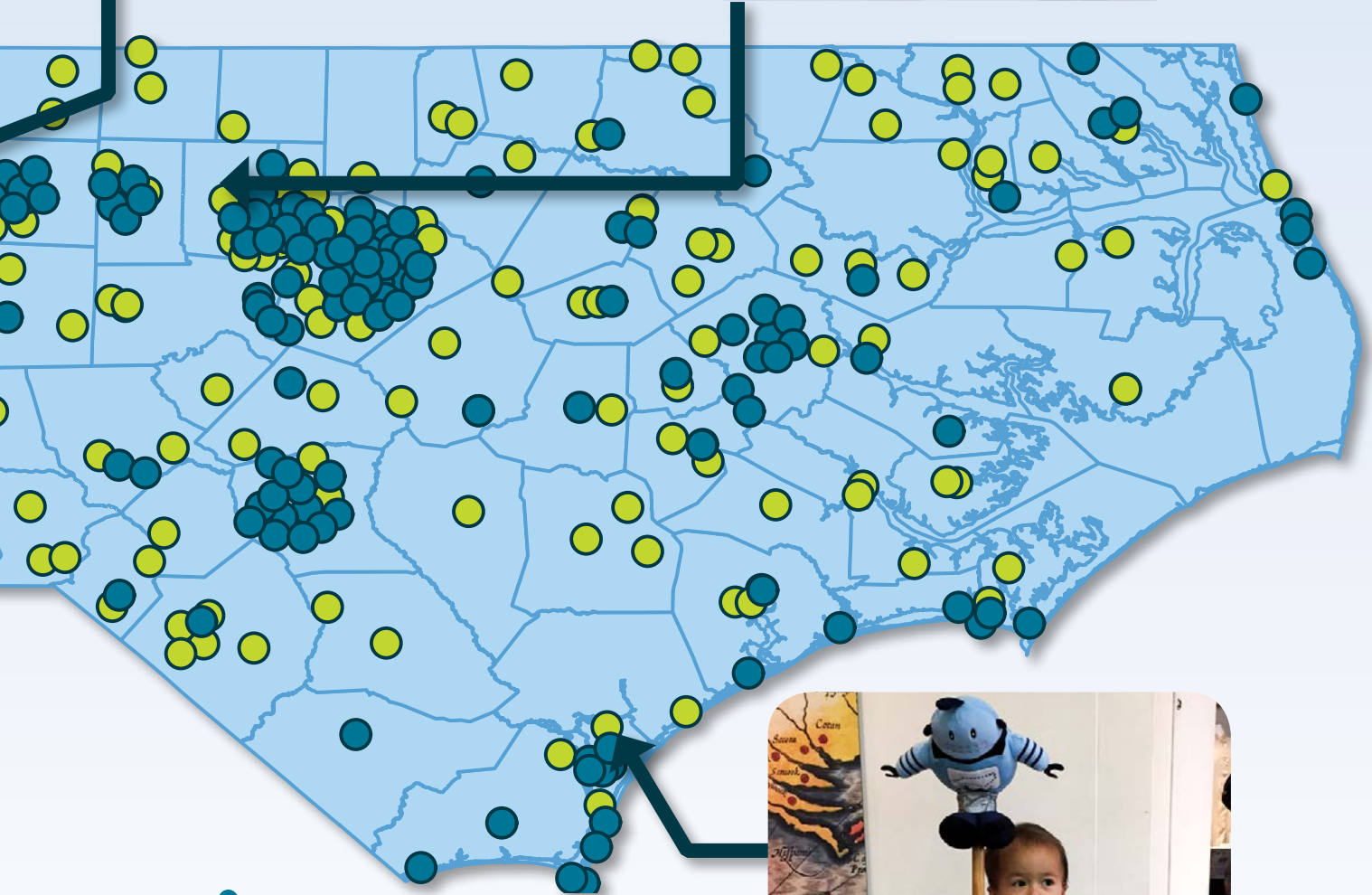


Photo credit: Nora Coffey

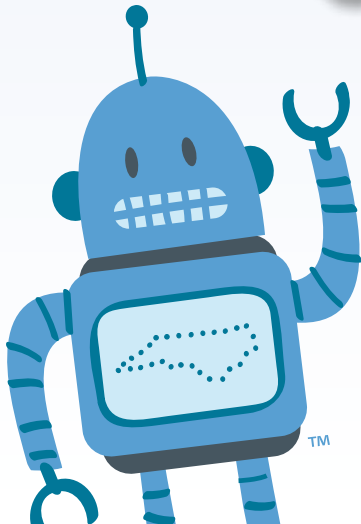


Lake James State Park Star Party  
NEBO

Oh Ick! 114 Science Experiments  
Guaranteed to Gross You Out!  
with author Jessica Garrett  
CHAPEL HILL



Little Explorers: Science Parade  
WILMINGTON



Special thanks to Kenny  
Brooks for map production



# Event Hosts

The North Carolina Science Festival would like to thank the following partners for their leadership in sharing STEM with their communities.



Official Expo



Statewide Star Party



Kelvin's Choice



Novozymes SciMatch



Event Sponsorship



Festival Favorite



Signature Event



Adults Only



Duke Energy Science Night



UNC Challenge Grant

A Time For Science  

A.C. Reynolds Middle 

Ackland Art Museum

Advanced Applied STEM Academy at Northside High School

Ahoskie Elementary 

Alamance County Public Library

Alamance County's Science Cafe: Tectonic Plates

Alamance Makers Guild   

Anderson Elementary 

Andrews Middle 

Apex Middle 

Appalachian Science Experiment

Appalachian State University   

Appalachian State University - Dark Sky Observatory 

Archdale Elementary 

Armstrong Elementary 

Art of Cool

ArtSpace Charter School 

Ashe County Public Library

Ashe Science Club

Asheville Museum of Science 

Aurora Fossil Museum 

B.F. Grady Elementary 

Bain Elementary 

Bald Head Island Conservancy 

Banks Elementary 

Beaufort Elementary 

Beaufort Middle 

Belville Elementary 

Benson Elementary 

**Backyard Habitat Expo**  
**HUNTERSVILLE**



- Bethel Middle 🌿
- Beulaville Elementary 🌿
- Beverly Hills Elementary 🌿
- Big Brothers Big Sisters of the Triangle 🌿 \$
- BioNetwork
- Blue Creek Elementary 🌿
- Blue Jay Point County Park
- Blue Ridge Astronomy Group ☆
- Boiling Springs Elementary
- Bolton Elementary 🌿
- Bowman Middle 🌿
- Brunswick County STEM Council
- Buckland Elementary 🌿
- Buncombe County Schools 🌐
- Burlington Recreation & Parks ☆
- Burnsville Elementary 🌿
- Burton Magnet Elementary 🌿
- Cabarrus County Active Living & Parks
- Cabarrus County Public Library - Concord Branch
- Cabarrus County Public Library - Harrisburg Branch
- Cape Fear Botanical Garden ☆
- Cape Fear Museum of History & Science 🌐 ☆ \$
- Carolina Raptor Center
- Carolinas Aviation Museum ❤️ \$
- Caroline Calouche & Co.
- Carr Elementary 🌿
- Carter G. Woodson School 🌿
- Carvers Creek State Park
- Castle Hayne Elementary 🌿
- Catawba Lands Conservancy ☆
- Catawba Science Center 🧠
- Centennial Campus Magnet 🌿
- Center for Inquiry-Based Learning
- Central Middle 🌿
- Chapel Hill Public Library
- Charles C. Bell Elementary 🌿
- Charlotte Mecklenburg Library
- Charlotte Mecklenburg Library - Beatties Ford Road Branch 🌐
- Charlotte Mecklenburg Library - Cornelius Branch
- Charlotte Mecklenburg Library - Davidson Branch
- Charlotte Mecklenburg Library - Hickory Grove Branch

- Charlotte Mecklenburg Library - ImaginOn: The Joe and Joan Martin Center
- Charlotte Mecklenburg Library - Independence Regional Library
- Charlotte Mecklenburg Library - Matthews Branch 🍷
- Charlotte Mecklenburg Library - Mint Hill Branch
- Charlotte Mecklenburg Library - Mountain Island Branch
- Charlotte Mecklenburg Library - Myers Park Branch 🍷
- Charlotte Mecklenburg Library - North County Regional Library
- Charlotte Mecklenburg Library - Plaza Midwood Branch
- Charlotte Mecklenburg Library - Scaleybark Branch
- Charlotte Mecklenburg Library - South County Regional Branch
- Charlotte Mecklenburg Library - Steele Creek Branch
- Charlotte Mecklenburg Library - Sugar Creek Branch
- Charlotte Mecklenburg Library - University City Regional Branch 🍷
- Charlotte Mecklenburg Library - West Boulevard Branch
- Chatham Middle 🌿

- Cherokee County Schools 21st Century Community Learning 🌿
- China Grove Middle 🌿
- City of Greenville Recreation & Parks Department
- City of Raleigh Parks, Recreation & Cultural Resources Department
- City of Raleigh Solid Waste Services Department
- Clear Creek Elementary
- Cloverleaf Elementary 🌿
- Colerain Elementary 🌿
- Coleridge Elementary 🌿
- Coltrane-Webb STEM Elementary \$
- Cooleemee Elementary 🌿
- Core Sound Waterfowl Museum & Heritage Center
- Cove Creek School 🌿
- Cox Mill High School 🌿
- Creedmoor Elementary School of the Arts 🌿
- Creswell Elementary 🌿
- Crown Point Elementary 🌿
- Cullowhee Valley School 🌿
- Cumberland County Public Library & Information Center - Bordeaux Branch Library
- Cumberland County Public Library & Information Center - Cliffdale Library

**Statewide Star Party:  
Cape Fear Museum  
WILMINGTON**



Photo credit: HENDY STREET PRODUCTIONS

- Cumberland County Public Library & Information Center - East Regional Branch Library
- Cumberland County Public Library & Information Center - Headquarters Library
- Cumberland County Public Library & Information Center - Hope Mills Library
- Cumberland County Public Library & Information Center - North Regional Library
- Cumberland County Public Library & Information Center - Spring Lake Library
- Cumberland County Public Library & Information Center - West Regional Library
- Cumberland County Schools AIG K-2 Discovery
- Davidson College - Physics Department
- Delta Sigma Theta Sorority, Inc. Durham Alumnae Chapter & Durham NC Chapter, The Links Inc.
- Discovery Place Kids - Huntersville
- Discovery Place Nature
- Discovery Place Science
- Dismal Swamp State Park
- Duke Institute for Brain Sciences
- Duke Lemur Center
- Duke University - Department of Physics

- Durant Nature Preserve
- Durham Parks & Recreation
- East Carolina Biodiversity Initiative
- East Columbus High School
- East Lincoln Middle
- Eastern Wayne Elementary
- Eastfield Global Magnet School
- Eblen Intermediate School
- Education Matters in Catawba Valley
- Elizabeth City State University
- Elizabethtown Primary
- Elk Knob State Park
- E.M. Rollins Elementary
- Englewood Elementary
- Eno River Academy
- Eno River State Park
- Envision Science Academy
- Fairview Heights Elementary
- Falls Lake State Recreation Area
- Fascinate-U Children's Museum
- Flat Rock Elementary
- Flyleaf Books
- Forrest W. Hunt Elementary
- Forsyth Astronomical Society
- Fort Macon State Park
- Frank Morgan Elementary

- Franklin County Schools
- G.E. Massey Elementary
- G.R. Whitfield School
- Gardner Park Elementary
- Gaston College
- Gaston Elementary
- Gatesville Elementary
- Germantown Elementary
- Githens Middle
- Given Memorial Library & Tufts Archives
- Glade Creek School
- Glenwood Elementary
- Google
- Grady A. Brown Elementary
- Granite Falls Middle
- Granite Quarry Elementary
- Greene County Schools
- Greenfield School
- Greensboro Children's Museum
- Greensboro Science Center
- Greenville Recreation & Parks
- Guilford Technical Community College - Cline Observatory
- G.W. Carver Elementary
- Hammocks Beach State Park
- Hands On!-A Child's Gallery
- Hanging Rock State Park
- Harris Lake County Park
- Harris Middle
- Havelock Elementary
- Hayesville Elementary
- Henderson Collegiate
- Hertford Grammar School
- Hiddenite Elementary
- High Point Museum
- High Point University
- Hillandale Elementary
- Historic Edenton State Historic Site
- Historic Oakwood Cemetery
- Historical Museum & Indian Village of Grifton
- Hodge Road Elementary
- Hollister Elementary
- Holly Ridge Middle
- Horizons Unlimited
- Hornets Nest Elementary
- Horseshoe Farm Nature Preserve
- Hot Springs Elementary

Howell Woods Environmental Learning Center ☆

IC Imagine Charter School ✂

Imagination Station Science & History Museum ☆ \$

Imperial Centre for the Arts & Sciences ☆

J. Glenn Edwards Elementary ↻

Jackson County Public Library

Jackson Park Elementary ↻

Jacksonville Commons Elementary ↻

James H. Lynn Planetarium Schiele Museum of Natural History ☆

Jamestown Middle ✂

Jamesville Elementary ↻

Jefferson Elementary ↻

John Small School ↻

Johnston Community College

Jones County Schools ↻

Jonesville Elementary ↻

Jordan Lake State Recreation Area

Junaluska Elementary ↻

Kaleideum

Kathleen Clay Library

Kenansville Elementary ↻

Kidzu Children's Museum 🍷

Kimmel Farm Elementary ↻

KIPP Gaston College Prep Primary ↻



Photo credit: Ben Shepard

**Science in the Movies:  
Mental Health & Mental Illness  
DURHAM**

Kitty Hawk Elementary ↻

Lake James State Park ☆

Lake Norman State Park ☆

Laurel Mill Elementary ↻

Lilesville Elementary ↻

Lincoln Elementary, Leland ↻

Lincoln Elementary, Ruffin ↻

Little River K-8 School ✂

Little River Regional Park & Natural Area ☆

Longview Elementary ↻

Los Puentes Two-Way Immersion Program at Snow Hill Primary School ↻

Love A Sea Turtle

Lumberton Junior High ↻

Mabel Elementary ✂

Macon County Public Library

Macon County School Board \$

Makerspace Charlotte

Marbles Kids Museum @ 🌱

Martin Millenium Academy ↻ ✂

Mattamuskeet Early College High ✂

Mattamuskeet Elementary ↻

McDougle Middle ✂

Medoc Mountain State Park ☆

Methodist University ☆

Metrolina Scholars Academy ✂

Middlesex Elementary ↻

Millbrook Elementary Magnet ↻

Mills Park Middle ✂

Mineral Springs Elementary ↻

Monroe Avenue Elementary ↻



**Randolph Science Day  
ASHEBORO**

Mountain Park Elementary 🔄  
 Mountain View Intermediate 🔄  
 Mt. Jefferson State Natural Area  
 Mt. Pleasant Public Library 📖  
 Museum of Coastal Carolina - Ingram Planetarium ⭐  
 Museum of Life & Science ❤️🧬  
 Nantahala School 🔄  
 NC A&T College of Engineering 🏛️  
 NC Children's Hospital 🔄  
 NC Coastal Federation  
 NC Coastal Land Trust ❤️  
 NC Museum of Natural Science at Whiteville  
 NC Museum of Natural Sciences 🧠🧬💰  
 NC Museum of Natural Sciences at Prairie Ridge Ecostation ⭐  
 NC Science Olympiad  
 NC Space Grant  
 NCSU - College of Sciences  
 NCSU - Genetic Engineering and Society Center 🏛️  
 NCSU - Leadership in Public Science Cluster 🧬📖🏛️  
 NC State University  
 NC Wesleyan College - Students Helping Students Afterschool Program 🔄  
 Neal Middle 🏠  
 Neuseway Science Museum & Planetarium  
 New Bridge Middle 🏠  
 New Hope Valley Railway  
 NC Aquarium at Fort Fisher 💰  
 NC Aquarium at Roanoke Island ⭐💰  
 NC Estuarium 💰  
 NC Geological Survey  
 NC Maritime Museum  
 NC School of Science and Mathematics ❤️🏛️  
 North Elementary 🔄  
 North Graham Elementary 🔄  
 North Topsail Elementary 🔄  
 Northside K-8 🔄  
 Oak Lane Elementary 🔄  
 Oaks Road Elementary 🔄  
 Old Town Global Academy 🔄  
 Onslow County Museum - Onslow County Environmental Education Center ⭐



Photo credit: Heidi Carlone

Outer Banks Center for Wildlife Education  
 Page Street Elementary 🔄  
 Pamlico County Middle 🏠  
 Pamlico County Primary School 🔄  
 Pasquotank Elementary 🔄  
 Patriots STEM Elementary  
 Paul J. Ciener Botanical Garden  
 Pembroke Elementary 🔄  
 Pembroke Middle 🏠  
 Piedmont Environmental Center  
 Piedmont Wildlife Center  
 Pilot Mountain State Park ⭐  
 Pisgah Astronomical Research Institute ⭐  
 Port Discover ❤️📖  
 Princeville Elementary 🔄  
 Queen Anne's Revenge Conservation Lab ❤️  
 Randleman Middle 🏠  
 Randolph Community College  
 Raven Rock State Park 💰  
 Reidsville Middle 🏠  
 Research Triangle Materials Research Science Engineering Center 🧬🏛️  
 Richfield Elementary 🔄  
 Ridge Road Middle 🏠

Riverside Middle  
 Riverview Elementary 🔄  
 Robbinsville Elementary  
 Rocky Mount Children's Museum & Science Center  
 Rocky Mount Preparatory School 🔄  
 Rocky River Elementary 🔄  
 Rowan-Cabarrus Community College 🧠🏛️💰  
 Rum Runner Dive Shop  
 Saluda Elementary 🔄  
 Sam D. Bundy Elementary 🔄  
 SAS  
 Schiele Museum of Natural History - James H. Lynn Planetarium 🧬💰  
 Science Communicators of North Carolina 🧬💰  
 SciTech Institute ❤️  
 Scotland County Memorial Library  
 Scotts Creek School 🏠  
 Sherwood Elementary 🔄  
 Shughart Middle 🏠  
 Siler City Elementary 🔄  
 South Creek Middle 🏠  
 South Mountains State Park  
 South Newton Elementary 🔄  
 Southwood Elementary 🔄

Spandex City Comics  
 Sparta Elementary 🔄  
 Spindale Elementary 🔄  
 St. Patrick Catholic School  
 Stallings Elementary  
 Stocks Elementary 🔄  
 Stone Mountain State Park  
 Sugarloaf Elementary 🔄  
 Swain County Schools 🔄  
 Sycamore Lane Elementary 🔄  
 Sylvan Heights Bird Park 💰  
 T.C. Henderson Elementary 🔄  
 The Children's Museum of Wilmington  
 The Children's Playhouse 🔄❤️💰  
 The Duke Initiative for Science & Society: Periodic Tables  
 The Joint School of Nanoscience and Nanoengineering 🔄❤️🔬  
 The North Carolina Arboretum 🧠  
 The North Carolina Leadership Academy  
 The Science House at CMAST 🔄  
 Town of Garner 🌟  
 Township Three Elementary 🔄  
 Trent Park Elementary 🔄  
 Triad Math and Science Academy Elementary 🔄  
 Tryon Elementary 🔄  
 T.S. Cooper Elementary 🔄  
 Tyrrell Elementary 🔄  
 UNC Asheville - Lookout Observatory

UNC Asheville - Society of Physics Students  
 UNC-Chapel Hill - Morehead Planetarium and Science Center 🧠🔬❤️🌱🌟  
 UNC Charlotte 🧠🔬  
 UNC Charlotte - Department of Physics and Optical Science 🌟  
 UNC Greensboro 🧠🔬  
 UNC Pembroke  
 UNC-TV 🔄🔬  
 UNC Wilmington - Center for Assistive Technology 🔄🔬  
 Union Chapel Elementary 🔄  
 Union County Extension Master Gardener Volunteer Association  
 Union Cross Elementary 🔄  
 Union Elementary, Clinton 🔄  
 Union Elementary, Rowland 🔄  
 Union Elementary, Shelby  
 United States Environmental Protection Agency  
 Valle Crucis School 🔄🌱  
 Vass-Lakeview Elementary 🔄  
 Vinson-Bynum Elementary 🔄  
 Virginia Cross Elementary 🔄  
 Voyager Academy 🔄  
 W. Kerr Scott Dam and Reservoir 🌟  
 W.A. Young Elementary 🔄  
 Wagram Elementary 🔄  
 Wake County Parks, Recreation & Open Space 🌟

Wake County Solid Waste Management Division  
 Wake Forest University - Pro Humanitate Institute  
 Wake Technical Community College 🔄  
 Walkertown Elementary 🔄  
 Walnut Creek Wetland Center 🔄  
 Warrenwood Elementary  
 Wayne Avenue Elementary 🔄  
 Wayne County Public Library  
 Welcome Elementary 🔄  
 Weldon Middle 🔄  
 West Hoke Elementary 🔄  
 West Lenoir Elementary 🔄  
 West Marion Elementary 🔄  
 West Pine Middle 🌱  
 Western Alamance Middle 🌱  
 Western Carolina University 🌟❤️  
 Weymouth Woods Sandhills Nature Preserve 🌟  
 White Oak Elementary 🔄  
 Wilkerson Nature Preserve 🌟  
 Wilkesboro Elementary 🔄  
 William B. Umstead State Park 🌟  
 Williamston Primary School 🔄  
 Willis Hare Elementary 🔄  
 Wilson's Mills Elementary 🔄  
 Woodhill Elementary 🔄  
 Woodrow Wilson Elementary 🔄  
 York Chester Middle 🌱



Photo credit: Jon Gardiner

On April 6, N.C. Governor Roy Cooper visited Morehead Planetarium and Science Center to sign a proclamation declaring April STEM Education Month. This proclamation coincides with the Festival's big news for next year: the 2018 Festival will span the entire month of April!



April 7–April 23, 2017

The North Carolina Science Festival is made possible by the generous support of its sponsors.

PRESENTING SPONSOR



DIAMOND CHAMPION



PLATINUM SPONSORS



GOLD SPONSORS



BRONZE SPONSORS

FedEx • NC Electric Cooperatives • Novozymes • PSNC Energy • Syngenta • UNC Health Care

SUPPORTER

BioNetwork

Proudly produced by



UNC MOREHEAD PLANETARIUM AND SCIENCE CENTER